

## **MEMORANDUM**

**TO: Interested Persons**

**FROM: Brian DiNapoli**

**DATE: August 29, 2008**

**SUBJECT: County Jail Report – August 2008**

Enclosed is the County Jail Inmate Report for August 2008. This report reflects the inmate population on August 7, 2008. This month, all of the functional county jails provided inmate information. The data in this report represents 100 percent of the county jails reporting and 100 percent of the State's population. Please note this report is a collaborative effort of both state and local agencies/departments, and the publication date is dependent upon a number of variables that are not within the direct control of the Department of Community Affairs. However, we make every effort to release the report as early as possible.

In August 2008, the number of inmates held in county jails *increased* by 588 inmates to 41,439. Total capacity increased by 284 to 42,043. This change is result of a letter that was recently sent to Sheriffs advising them to update their county jail's capacity. There might be more changes next month. Also, please note that some jails decreased their capacity. The following jails changed their capacity: Bulloch County (387 capacity was 106), Glynn County (444 capacity was 344), Douglas County (485 capacity was 810), Dawson County (200 capacity was 120), Hart County (50 capacity was 53), Floyd County (838 capacity was 790), Rabun County (102 capacity was 96), Coffee County (218 capacity was 188), Lincoln County (81 capacity was 92), Union County (57 capacity was 54), Screven County (176 capacity was 150), Liberty County (300 capacity was 252), Jeff Davis County (64 capacity was 68), and McDuffie County (222 capacity was 217). The number of inmates awaiting trial *increased* by 506 inmates to 24,878, and the number of sentenced inmates awaiting transfer to State Institutions *increased* by 124 inmates to 4,568.

The jail report is available at <http://www.dca.state.ga.us/development/research/programs/jailReports.asp>.

Please contact me at 404-679-3147 if you have any questions.

/bd  
Enclosures

# SUMMARY

## COUNTY JAIL INMATE POPULATION REPORT<sup>1</sup> August 7, 2008

\*\*\*\*\*  
\*\*

### 1. NUMBER OF JAIL INMATES

INCREASED by 588 from 40,851 in July to: **41,439**

### 2. CAPACITY OF JAILS REPORTING (PERMANENT BEDS)

INCREASED by 284 from 41,759 to: **42,043**

### 3. PERCENT OF CAPACITY OF JAILS REPORTING – 99%

### 4. NUMBER OF JAILS OVER CAPACITY

Remained the same: **47**

### 5. INMATES SENTENCED TO STATE INSTITUTIONS

INCREASED by 124 from 4,444 in July to: **4,568**

### 6. PERCENTAGE OF INMATES HOUSED AT COUNTY LEVEL SENTENCED TO STATE – 11%

### 7. NUMBER OF INMATES AWAITING TRIAL IN JAIL

INCREASED by 506 from 24,372 in July to: **24,878**

### 8. PERCENTAGE OF PRETRIAL INMATES – 60%

### 9. NUMBER OF COUNTY SENTENCED INMATES

INCREASED by 178 from 6,077 in July to: **6,255**

### 10. PERCENTAGE OF COUNTY SENTENCED INMATES – 15%

### 11. NUMBER OF OTHER INMATES

DECREASED by 220 from 5,958 in July to: **5,738**

### 12. PERCENTAGE OF OTHER INMATES – 14%

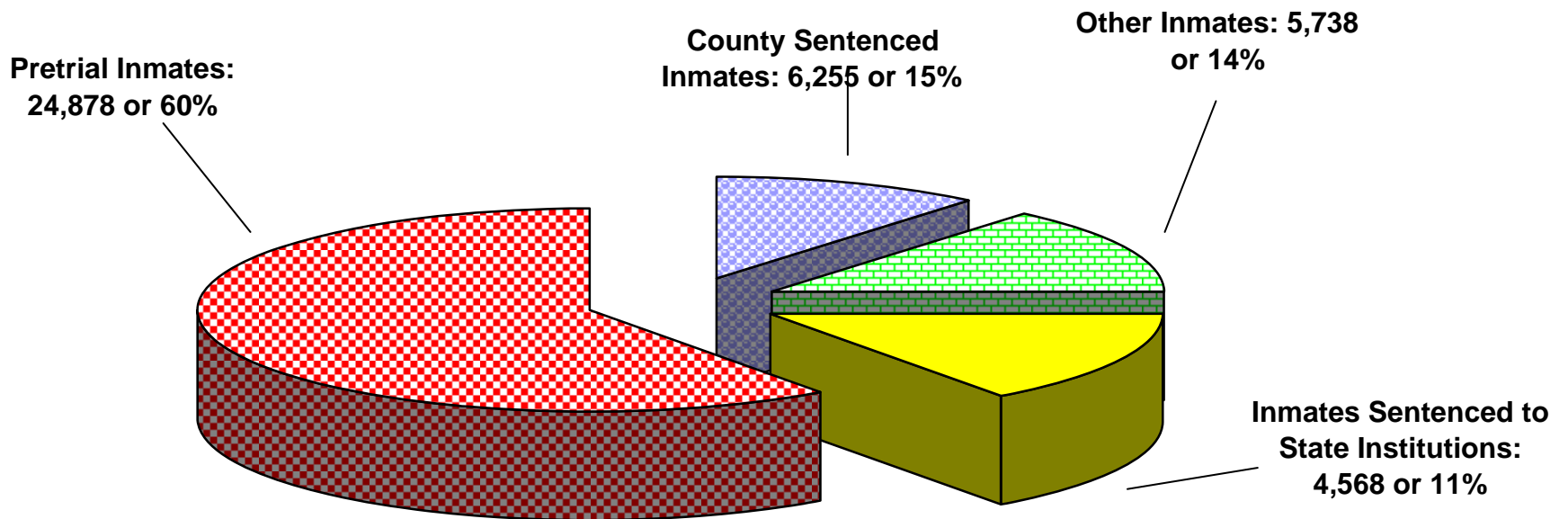
### 13. PERCENTAGE OF JAILS REPORTING – 100%

### 14. PERCENTAGE OF STATE POPULATION WITH JAILS REPORTING – 100%

---

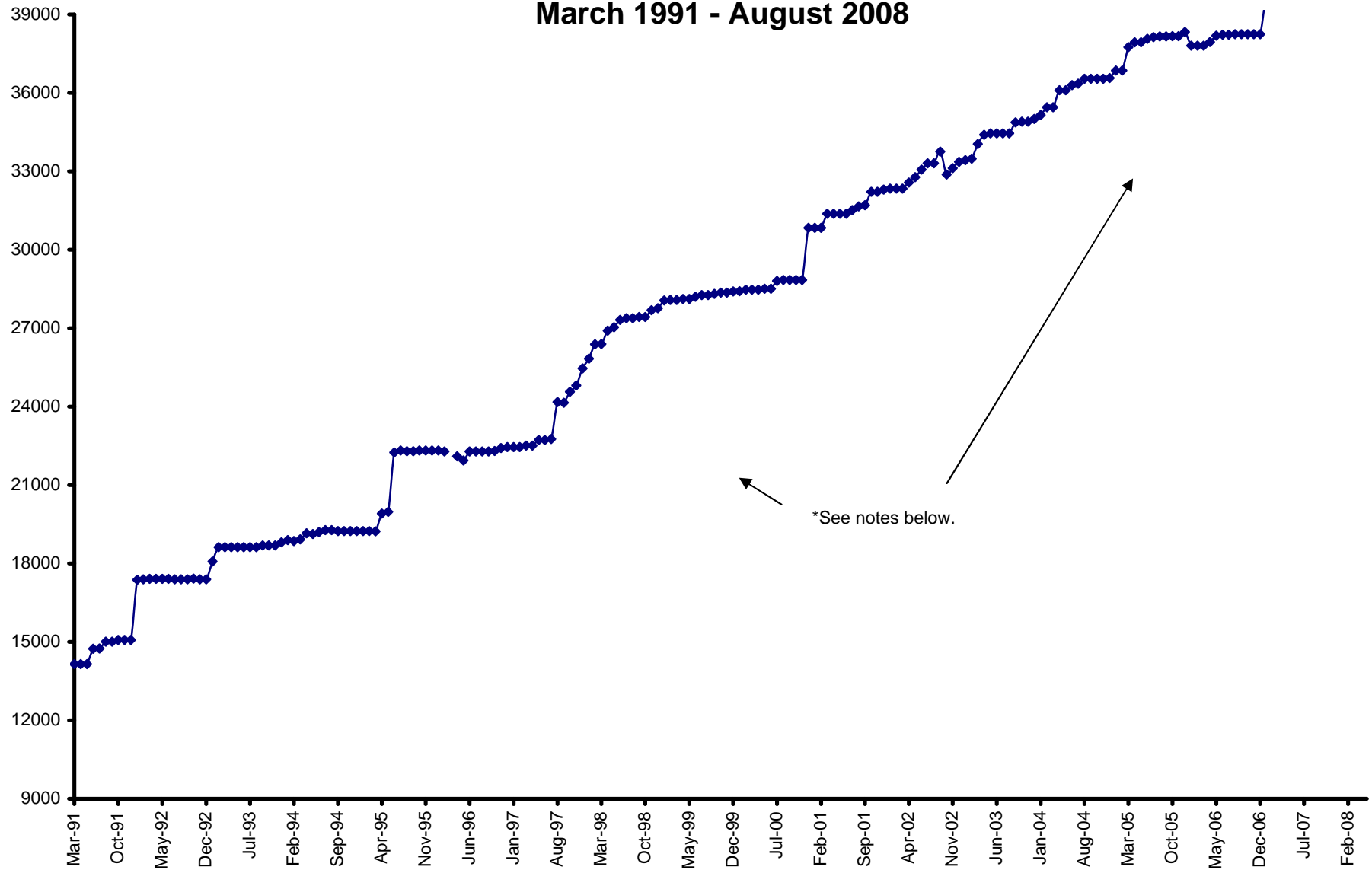
<sup>1</sup> In cooperation with the Georgia Crime Information Center, the Georgia Department of Community Affairs compiles and publishes this report for the Georgia Sheriffs' Association and the Association of County Commissioners of Georgia.

# Composition of County Jail Population August 2008



# CAPACITY OF COUNTY JAILS

March 1991 - August 2008

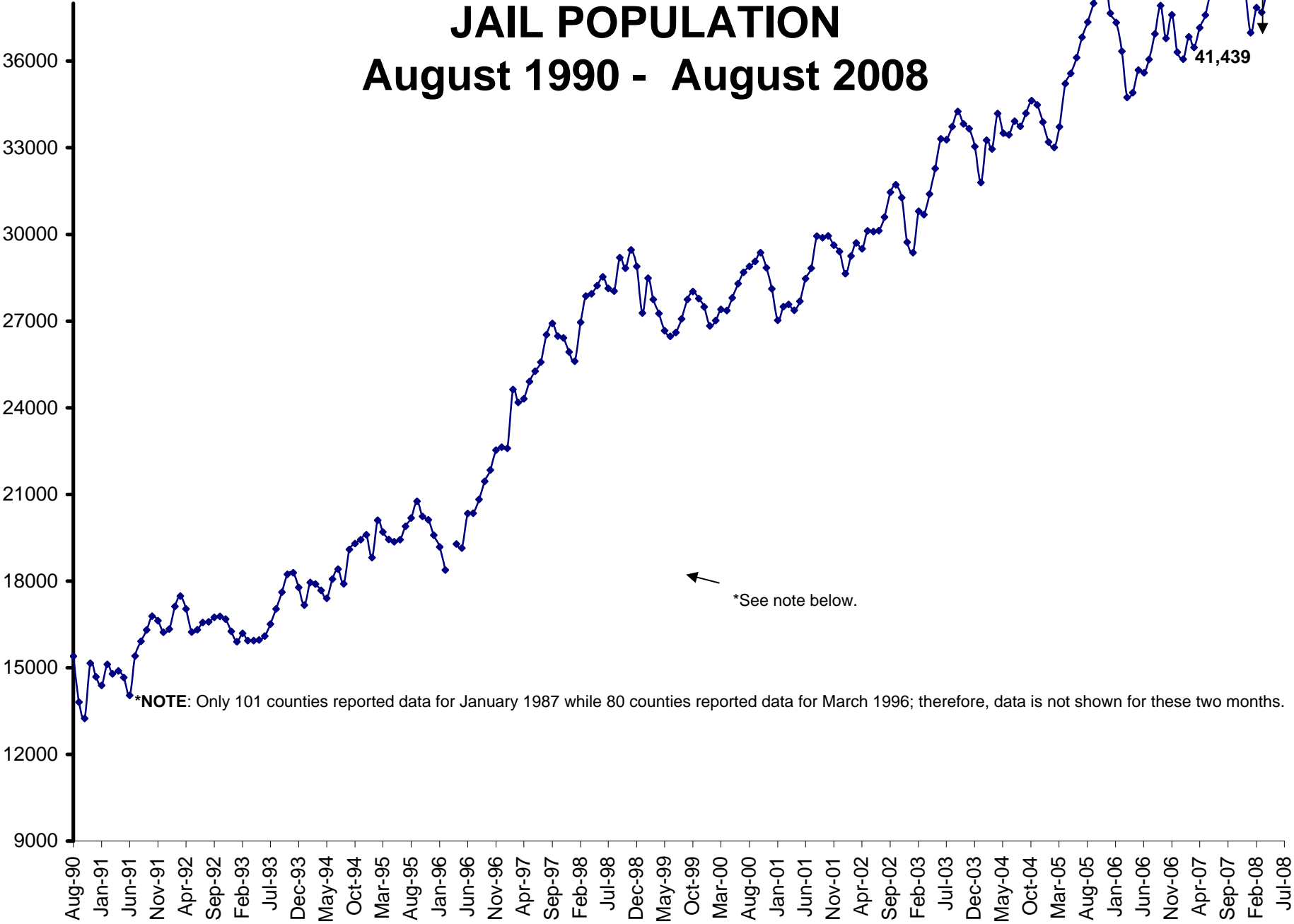


\*See notes below.

**\*NOTE:** Only 101 counties reported data for January 1987 while 80 counties reported data for March 1996; therefore, data is not shown for these two months. The capacity dropped significantly in October 2002 after Clayton County closed 890 beds because of staffing shortages.

# JAIL POPULATION

## August 1990 - August 2008

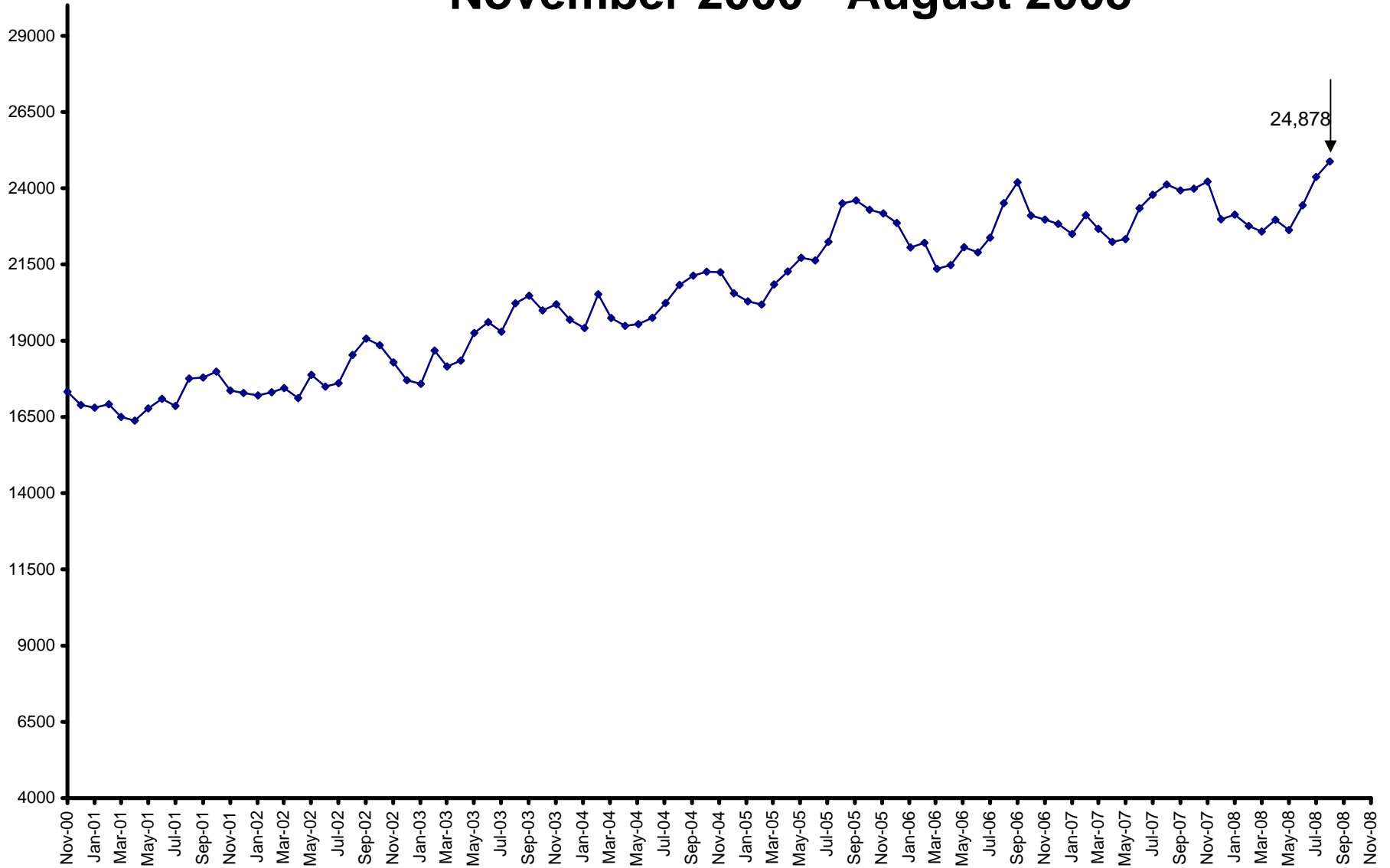


\*NOTE: Only 101 counties reported data for January 1987 while 80 counties reported data for March 1996; therefore, data is not shown for these two months.

\*See note below.

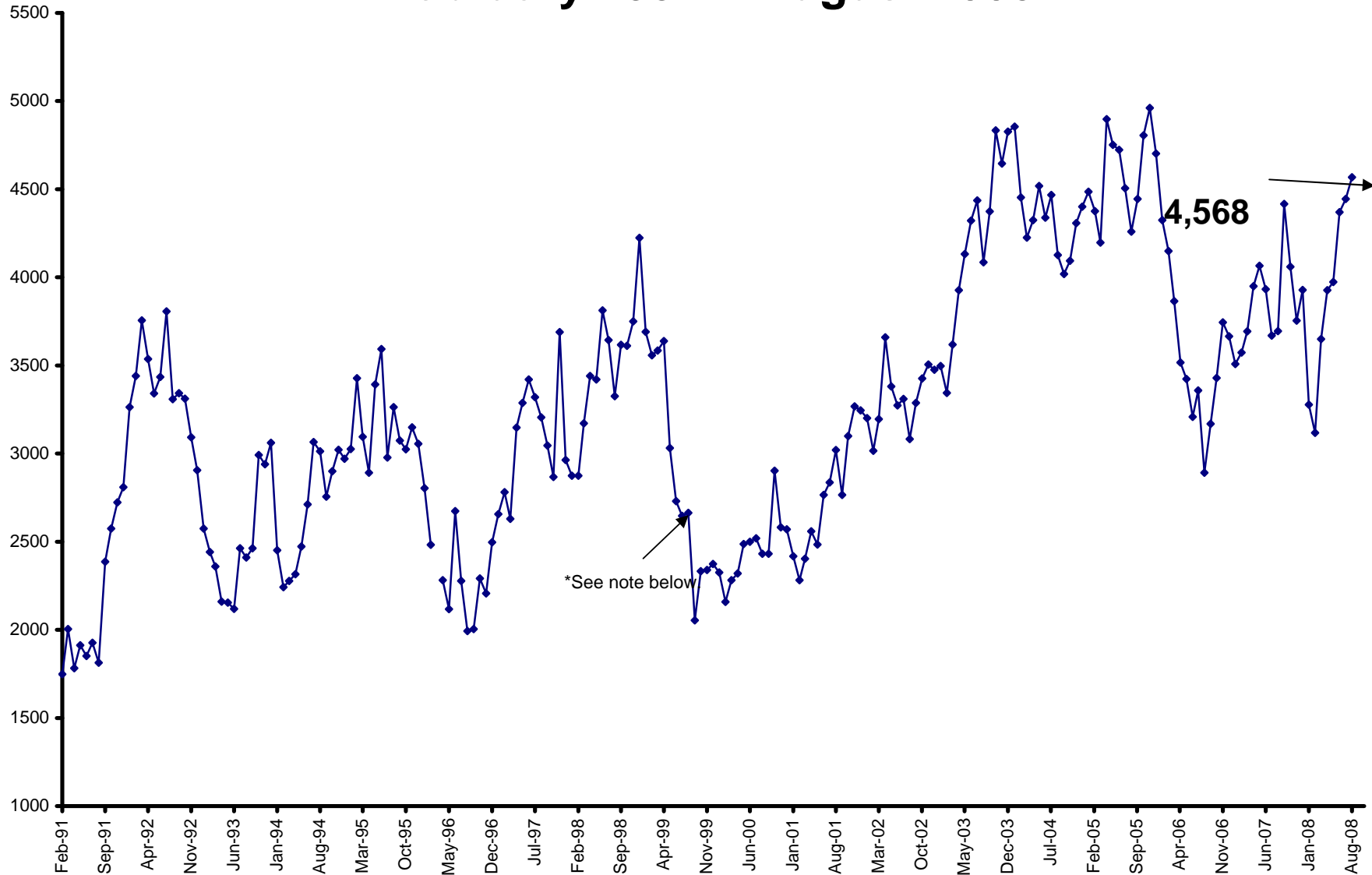
# INMATES AWAITING TRIAL IN JAIL

## November 2000 - August 2008



# INMATES SENTENCED TO STATE INSTITUTIONS

## February 1991 - August 2008



**\*NOTE:** Only 101 counties reported data for January 1987 while 80 counties reported data for March 1996; therefore, data is not shown for these two months.

**County Jail Report**  
**Primary Jail Capacity Data**  
**August 2008**

(Does not include Inmates housed in other detention facilities such as Work Release Centers, County Prisons, etc.)

Jurisdiction	Total Number of Inmates		Jail Capacity	Inmates as % of Capacity	Number of Inmates Sentenced to State		Number of Inmates Awaiting Trial in Jail		Number of Inmates Serving County Sentence		Number of Other Inmates		
	In Jail	Capacity			Number	% of Total	Number	% of Total	Number	% of Total	Number	% of Total	
001	APPLING	73	84	87%	20	27%	40	55%	3	4%	10	14%	
002	ATKINSON	14	18	78%	2	14%	10	71%	0	0%	2	14%	
003	BACON	57	68	84%	1	2%	33	58%	13	23%	10	18%	
004	BAKER	7	14	50%	0	0%	2	29%	1	14%	4	57%	
005	BALDWIN	243	187	130%	12	5%	162	67%	51	21%	18	7%	
006	BANKS	57	60	95%	3	5%	30	53%	6	11%	18	32%	
007	BARROW	302	90	336%	24	8%	230	76%	37	12%	11	4%	
008	BARTOW	619	471	131%	71	11%	308	50%	211	34%	29	5%	
009	BEN HILL	134	136	99%	7	5%	117	87%	0	0%	10	7%	
010	BERRIEN	85	72	118%	0	0%	0	0%	50	59%	35	41%	
011	BIBB	889	966	92%	124	14%	329	37%	26	3%	410	46%	
012	BLECKLEY	NO JAIL	0	0	0%	0	0%	0	0%	0	0%	0	0%
013	BRANTLEY		17	23	74%	1	6%	0	0%	0	0%	16	94%
014	BROOKS		71	112	63%	4	6%	43	61%	3	4%	21	30%
015	BRYAN		69	68	101%	5	7%	56	81%	4	6%	4	6%
016	BULLOCH		308	387	80%	29	9%	142	46%	103	33%	34	11%
017	BURKE		124	138	90%	4	3%	81	65%	7	6%	32	26%
018	BUTTS		173	316	55%	14	8%	136	79%	22	13%	1	1%
019	CALHOUN		10	42	24%	1	10%	9	90%	0	0%	0	0%
020	CAMDEN		169	188	90%	16	9%	138	82%	15	9%	0	0%
021	CANDLER		46	72	64%	12	26%	31	67%	0	0%	3	7%
022	CARROLL		535	682	78%	39	7%	73	14%	312	58%	111	21%
023	CATOOSA		192	248	77%	20	10%	137	71%	10	5%	25	13%
024	CHARLTON	NO JAIL	0	0	0%	0	0%	0	0%	0	0%	0	0%
025	CHATHAM		1849	1524	121%	182	10%	1571	85%	75	4%	21	1%
026	CHATTAHOOCHEE	NO JAIL	0	0	0%	0	0%	0	0%	0	0%	0	0%
027	CHATTOOGA		83	47	177%	25	30%	56	67%	2	2%	0	0%
028	CHEROKEE		566	512	111%	61	11%	469	83%	36	6%	0	0%
029	CLARKE		481	338	142%	14	3%	353	73%	114	24%	0	0%
030	CLAY	NO JAIL	0	0	0%	0	0%	0	0%	0	0%	0	0%
031	CLAYTON		1731	1920	90%	111	6%	879	51%	586	34%	155	9%
032	CLINCH		37	26	142%	16	43%	13	35%	0	0%	8	22%
033	COBB		2481	1925	129%	326	13%	1808	73%	294	12%	53	2%
034	COFFEE		271	218	124%	44	16%	218	80%	9	3%	0	0%
035	COLQUITT		214	210	102%	17	8%	161	75%	9	4%	27	13%
036	COLUMBIA		243	266	91%	12	5%	185	76%	43	18%	3	1%
037	COOK		109	108	101%	12	11%	75	69%	4	4%	18	17%
038	COWETA		321	300	107%	42	13%	189	59%	77	24%	13	4%
039	CRAWFORD		27	22	123%	4	15%	9	33%	7	26%	7	26%
040	CRISP		158	170	93%	14	9%	99	63%	27	17%	18	11%
041	DADE		64	96	67%	13	20%	35	55%	9	14%	7	11%
042	DAWSON		196	200	98%	12	6%	51	26%	74	38%	59	30%

**County Jail Report**  
**Primary Jail Capacity Data**  
**August 2008**

(Does not include Inmates housed in other detention facilities such as Work Release Centers, County Prisons, etc.)

Jurisdiction	Total Number of Inmates In Jail	Jail Capacity	Inmates as % of Capacity	Number of Inmates Sentenced to State		Number of Inmates Awaiting Trial in Jail		Number of Inmates Serving County Sentence		Number of Other Inmates		
				Number	% of Total	Number	% of Total	Number	% of Total	Number	% of Total	
043	DECATUR	198	175	113%	28	14%	95	48%	10	5%	65	33%
044	DEKALB	3206	3636	88%	173	5%	2469	77%	436	14%	128	4%
045	DODGE	102	72	142%	8	8%	55	54%	30	29%	9	9%
046	DOOLY	140	154	91%	16	11%	51	36%	1	1%	72	51%
047	DOUGHERTY	605	1230	49%	14	2%	561	93%	14	2%	16	3%
048	DOUGLAS	636	485	131%	68	11%	416	65%	131	21%	21	3%
049	EARLY	53	66	80%	6	11%	39	74%	8	15%	0	0%
050	ECHOLS NO JAIL	0	0	0%	0	0%	0	0%	0	0%	0	0%
051	EFFINGHAM	117	106	110%	39	33%	68	58%	9	8%	1	1%
052	ELBERT	60	96	63%	19	32%	11	18%	19	32%	11	18%
053	EMANUEL	119	102	117%	15	13%	49	41%	1	1%	54	45%
054	EVANS	15	26	58%	6	40%	9	60%	0	0%	0	0%
055	FANNIN	43	84	51%	6	14%	35	81%	1	2%	1	2%
056	FAYETTE	307	384	80%	46	15%	201	65%	59	19%	1	0%
057	FLOYD	725	838	87%	122	17%	330	46%	137	19%	136	19%
058	FORSYTH	106	134	79%	28	26%	48	45%	30	28%	0	0%
059	FRANKLIN	74	72	103%	3	4%	56	76%	12	16%	3	4%
060	FULTON	2922	2688	109%	148	5%	1844	63%	310	11%	620	21%
061	GILMER	112	142	79%	21	19%	72	64%	4	4%	15	13%
062	GLASCOCK NO JAIL	0	0	0%	0	0%	0	0%	0	0%	0	0%
063	GLYNN	558	444	126%	90	16%	302	54%	22	4%	144	26%
064	GORDON	256	142	180%	56	22%	114	45%	71	28%	15	6%
065	GRADY	121	124	98%	32	26%	46	38%	21	17%	22	18%
066	GREENE	87	125	70%	43	49%	34	39%	3	3%	7	8%
067	GWINNETT	2727	2744	99%	257	9%	1352	50%	495	18%	623	23%
068	HABERSHAM	90	130	69%	11	12%	59	66%	12	13%	8	9%
069	HALL	1174	1026	114%	205	17%	389	33%	229	20%	351	30%
070	HANCOCK	30	80	38%	2	7%	24	80%	0	0%	4	13%
071	HARALSON	104	120	87%	11	11%	70	67%	14	13%	9	9%
072	HARRIS	63	100	63%	12	19%	26	41%	0	0%	25	40%
073	HART	69	50	138%	14	20%	50	72%	3	4%	2	3%
074	HEARD	64	60	107%	41	64%	14	22%	7	11%	2	3%
075	HENRY	719	419	172%	128	18%	388	54%	203	28%	0	0%
076	HOUSTON	504	507	99%	46	9%	377	75%	63	13%	18	4%
077	IRWIN	617	689	90%	0	0%	43	7%	0	0%	574	93%
078	JACKSON	170	123	138%	1	1%	152	89%	4	2%	13	8%
079	JASPER	29	64	45%	3	10%	21	72%	1	3%	4	14%
080	JEFFDAVIS/HAZ	60	64	94%	18	30%	36	60%	3	5%	3	5%
081	JEFFERSON	125	128	98%	6	5%	42	34%	10	8%	67	54%
082	JENKINS	21	24	88%	7	33%	13	62%	0	0%	1	5%
083	JOHNSON	32	42	76%	4	13%	12	38%	11	34%	5	16%
084	JONES	124	125	99%	11	9%	74	60%	6	5%	33	27%

**County Jail Report**  
**Primary Jail Capacity Data**  
**August 2008**

(Does not include Inmates housed in other detention facilities such as Work Release Centers, County Prisons, etc.)

Jurisdiction	Total Number of Inmates In Jail	Jail Capacity	Inmates as % of Capacity	Number of Inmates Sentenced to State		Number of Inmates Awaiting Trial in Jail		Number of Inmates Serving County Sentence		Number of Other Inmates		
				Number	% of Total	Number	% of Total	Number	% of Total	Number	% of Total	
085	LAMAR	54	158	34%	1	2%	38	70%	15	28%	0	0%
086	LANIER	0	0	0%	0	0%	0	0%	0	0%	0	0%
087	LAURENS	274	270	101%	15	5%	229	84%	18	7%	12	4%
088	LEE	74	75	99%	12	16%	46	62%	15	20%	1	1%
089	LIBERTY	246	300	82%	48	20%	167	68%	4	2%	27	11%
090	LINCOLN	49	81	60%	2	4%	25	51%	2	4%	20	41%
091	LONG	0	0	0%	0	0%	0	0%	0	0%	0	0%
092	LOWNDES	719	620	116%	44	6%	453	63%	140	19%	82	11%
093	LUMPKIN	85	150	57%	20	24%	48	56%	16	19%	1	1%
094	MCDUFFIE	145	222	65%	16	11%	26	18%	42	29%	61	42%
095	MCINTOSH	90	114	79%	6	7%	31	34%	1	1%	52	58%
096	MACON	37	68	54%	8	22%	22	59%	5	14%	2	5%
097	MADISON	47	64	73%	7	15%	30	64%	1	2%	9	19%
098	MARION	19	30	63%	5	26%	14	74%	0	0%	0	0%
099	MERIWETHER	119	106	112%	12	10%	82	69%	23	19%	2	2%
100	MILLER	59	70	84%	6	10%	29	49%	19	32%	5	8%
101	MITCHELL	91	116	78%	26	29%	34	37%	23	25%	8	9%
102	MONROE	109	168	65%	8	7%	71	65%	26	24%	4	4%
103	MONTGOMERY	0	0	0%	0	0%	0	0%	0	0%	0	0%
104	MORGAN	77	67	115%	16	21%	50	65%	2	3%	9	12%
105	MURRAY	89	120	74%	21	24%	45	51%	23	26%	0	0%
106	MUSCOGEE	1167	927	126%	101	9%	742	64%	159	14%	165	14%
107	NEWTON	639	600	107%	212	33%	241	38%	96	15%	90	14%
108	OCONEE	61	136	45%	8	13%	20	33%	5	8%	28	46%
109	OGLETHORPE	52	64	81%	2	4%	47	90%	3	6%	0	0%
110	PAULDING	304	244	125%	32	11%	179	59%	57	19%	36	12%
111	PEACH	58	72	81%	3	5%	33	57%	17	29%	5	9%
112	PICKENS	75	140	54%	7	9%	65	87%	1	1%	2	3%
113	PIERCE	65	72	90%	49	75%	11	17%	4	6%	1	2%
114	PIKE	31	34	91%	1	3%	21	68%	1	3%	8	26%
115	POLK	165	362	46%	12	7%	108	65%	8	5%	37	22%
116	PULASKI	30	42	71%	4	13%	24	80%	0	0%	2	7%
117	PUTNAM	73	120	61%	20	27%	45	62%	4	5%	4	5%
118	QUITMAN	0	0	0%	0	0%	0	0%	0	0%	0	0%
119	RABUN	82	102	80%	13	16%	27	33%	10	12%	32	39%
120	RANDOLPH	25	32	78%	4	16%	18	72%	2	8%	1	4%
121	RICHMOND	1084	910	119%	73	7%	669	62%	112	10%	230	21%
122	ROCKDALE	466	308	151%	72	15%	328	70%	38	8%	28	6%
123	SCHLEY	9	12	75%	6	67%	3	33%	0	0%	0	0%
124	SCREVEN	68	176	39%	6	9%	37	54%	5	7%	20	29%
125	SEMINOLE	43	54	80%	9	21%	18	42%	4	9%	12	28%
126	SPALDING	453	540	84%	32	7%	338	75%	83	18%	0	0%

**County Jail Report**  
**Primary Jail Capacity Data**  
**August 2008**

(Does not include Inmates housed in other detention facilities such as Work Release Centers, County Prisons, etc.)

Jurisdiction	Total Number of Inmates In Jail	Jail Capacity	Inmates as % of Capacity	Number of Inmates Sentenced to State		Number of Inmates Awaiting Trial in Jail		Number of Inmates Serving County Sentence		Number of Other Inmates	
				Number	% of Total	Number	% of Total	Number	% of Total	Number	% of Total
127 STEPHENS	77	94	82%	12	16%	32	42%	2	3%	31	40%
128 STEWART	0	14	0%	0	0%	0	0%	0	0%	0	0%
129 SUMTER	185	262	71%	23	12%	119	64%	4	2%	39	21%
130 TALBOT	12	22	55%	0	0%	12	100%	0	0%	0	0%
131 TALIAFERO NO JAIL	0	0	0%	0	0%	0	0%	0	0%	0	0%
132 TATTNALL	60	46	130%	10	17%	30	50%	17	28%	3	5%
133 TAYLOR	22	27	81%	8	36%	10	45%	1	5%	3	14%
134 TELFAIR	26	36	72%	8	31%	14	54%	2	8%	2	8%
135 TERRELL	15	42	36%	0	0%	15	100%	0	0%	0	0%
136 THOMAS	199	270	74%	26	13%	136	68%	32	16%	5	3%
137 TIFT	253	260	97%	26	10%	34	13%	175	69%	18	7%
138 TOOMBS	114	128	89%	21	18%	85	75%	1	1%	7	6%
139 TOWNS	44	50	88%	4	9%	22	50%	8	18%	10	23%
140 TREUTLEN	12	8	150%	1	8%	7	58%	1	8%	3	25%
141 TROUP	452	240	188%	89	20%	280	62%	39	9%	44	10%
142 TURNER	45	102	44%	0	0%	0	0%	30	67%	15	33%
143 TWIGGS	32	48	67%	0	0%	0	0%	32	100%	0	0%
144 UNION	87	57	153%	30	34%	30	34%	24	28%	3	3%
145 UPSON	187	213	88%	26	14%	111	59%	35	19%	15	8%
146 WALKER	189	225	84%	62	33%	107	57%	17	9%	3	2%
147 WALTON	436	440	99%	68	16%	237	54%	66	15%	65	15%
148 WARE	426	500	85%	25	6%	239	56%	59	14%	103	24%
149 WARREN NO JAIL	0	0	0%	0	0%	0	0%	0	0%	0	0%
150 WASHINGTON	61	80	76%	7	11%	49	80%	2	3%	3	5%
151 WAYNE	182	170	107%	15	8%	155	85%	3	2%	9	5%
152 WEBSTER NO JAIL	0	0	0%	0	0%	0	0%	0	0%	0	0%
153 WHEELER	16	18	89%	3	19%	9	56%	3	19%	1	6%
154 WHITE	66	64	103%	8	12%	40	61%	7	11%	11	17%
155 WHITFIELD	433	551	79%	51	12%	270	62%	67	15%	45	10%
156 WILCOX	40	16	250%	6	15%	19	48%	4	10%	11	28%
157 WILKES	54	80	68%	15	28%	24	44%	10	19%	5	9%
158 WILKINSON	23	44	52%	3	13%	8	35%	0	0%	12	52%
159 WORTH	49	46	107%	4	8%	45	92%	0	0%	0	0%
<b>Grand Totals</b>	<b>41,439</b>	<b>42,043</b>	<b>99%</b>	<b>4,568</b>	<b>11%</b>	<b>24,878</b>	<b>60%</b>	<b>6,255</b>	<b>15%</b>	<b>5,738</b>	<b>14%</b>