

MEMORANDUM

TO: Interested Persons

FROM: Brian DiNapoli

DATE: July 29, 2008

SUBJECT: County Jail Report – July 2008

Enclosed is the County Jail Inmate Report for July 2008. This report reflects the inmate population on July 3, 2008. This month, all of the functional county jails provided inmate information. The data in this report represents 100 percent of the county jails reporting and 100 percent of the State's population. Please note this report is a collaborative effort of both state and local agencies/departments, and the publication date is dependent upon a number of variables that are not within the direct control of the Department of Community Affairs. However, we make every effort to release the report as early as possible.

In July 2008, the number of inmates held in county jails *increased* by 1,123 inmates to 40,851. The capacity decreased by 10 and is now 41,759. It was 41,769; Treutlen County had to close their old jail. Treutlen County's new capacity is 8, was 18. The number of inmates awaiting trial *increased* by 932 inmates to 24,372, and the number of sentenced inmates awaiting transfer to State Institutions *increased* by 75 inmates to 4,444.

The jail report is available at <http://www.dca.state.ga.us/development/research/programs/jailReports.asp>.

Please contact me at 404-679-3147 if you have any questions.

/bd
Enclosures

SUMMARY

COUNTY JAIL INMATE POPULATION REPORT¹ July 3, 2008

**

1. NUMBER OF JAIL INMATES

INCREASED by 1,123 from 39,728 in June to: 40,851

2. CAPACITY OF JAILS REPORTING (PERMANENT BEDS)

Decreased by 10 from 41,769 to: 41,759

3. PERCENT OF CAPACITY OF JAILS REPORTING – 98%

4. NUMBER OF JAILS OVER CAPACITY

INCREASED by 3 from 44 in June to: 47

5. INMATES SENTENCED TO STATE INSTITUTIONS

INCREASED by 75 from 4,369 in June to: 4,444

6. PERCENTAGE OF INMATES HOUSED AT COUNTY LEVEL SENTENCED TO STATE – 11%

7. NUMBER OF INMATES AWAITING TRIAL IN JAIL

INCREASED by 932 from 23,440 in June to: 24,372

8. PERCENTAGE OF PRETRIAL INMATES – 60%

9. NUMBER OF COUNTY SENTENCED INMATES

DECREASED by 238 from 6,315 in June to: 6,077

10. PERCENTAGE OF COUNTY SENTENCED INMATES – 15%

11. NUMBER OF OTHER INMATES

INCREASED by 354 from 5,604 in June to: 5,958

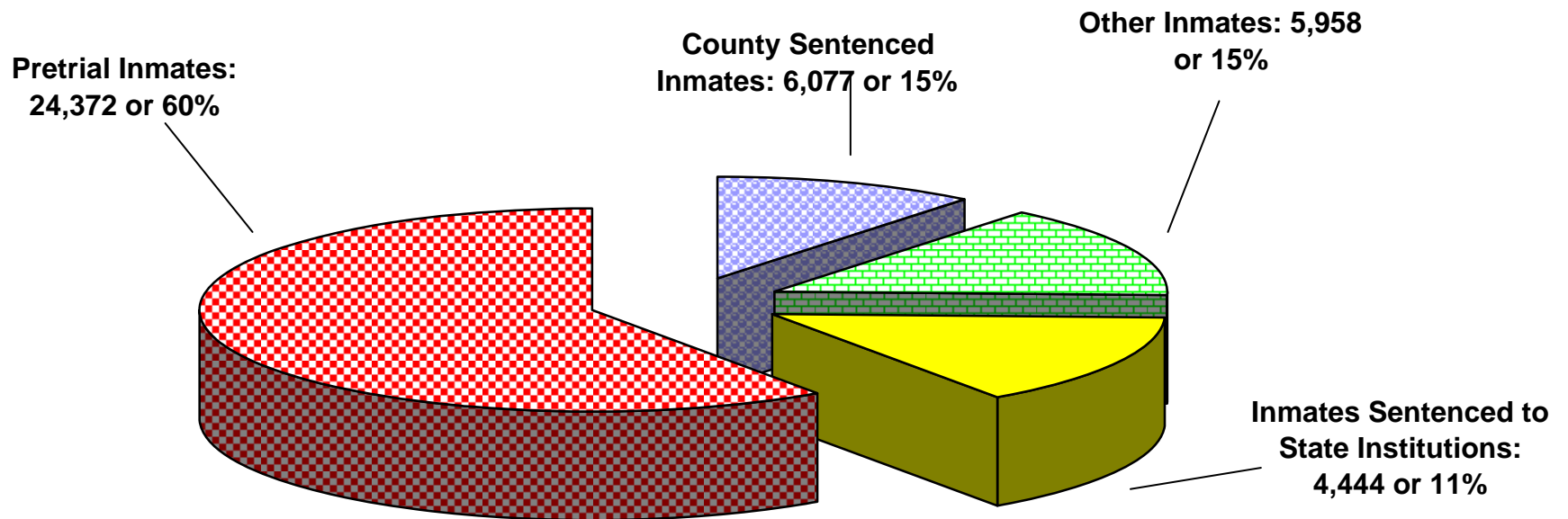
12. PERCENTAGE OF OTHER INMATES – 15%

13. PERCENTAGE OF JAILS REPORTING – 100%

14. PERCENTAGE OF STATE POPULATION WITH JAILS REPORTING – 100%

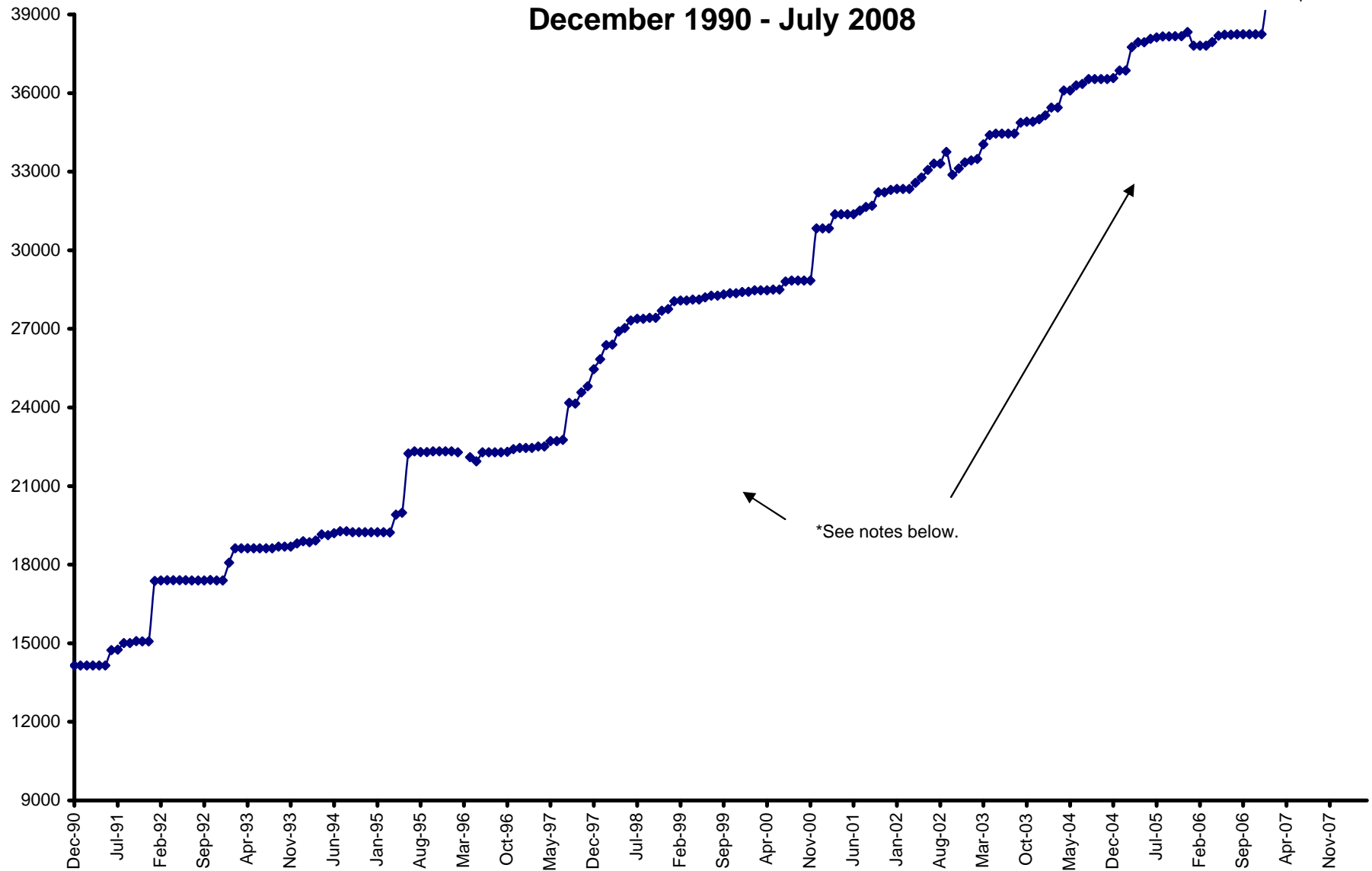
¹ In cooperation with the Georgia Crime Information Center, the Georgia Department of Community Affairs compiles and publishes this report for the Georgia Sheriffs' Association and the Association of County Commissioners of Georgia.

Composition of County Jail Population July 2008



CAPACITY OF COUNTY JAILS

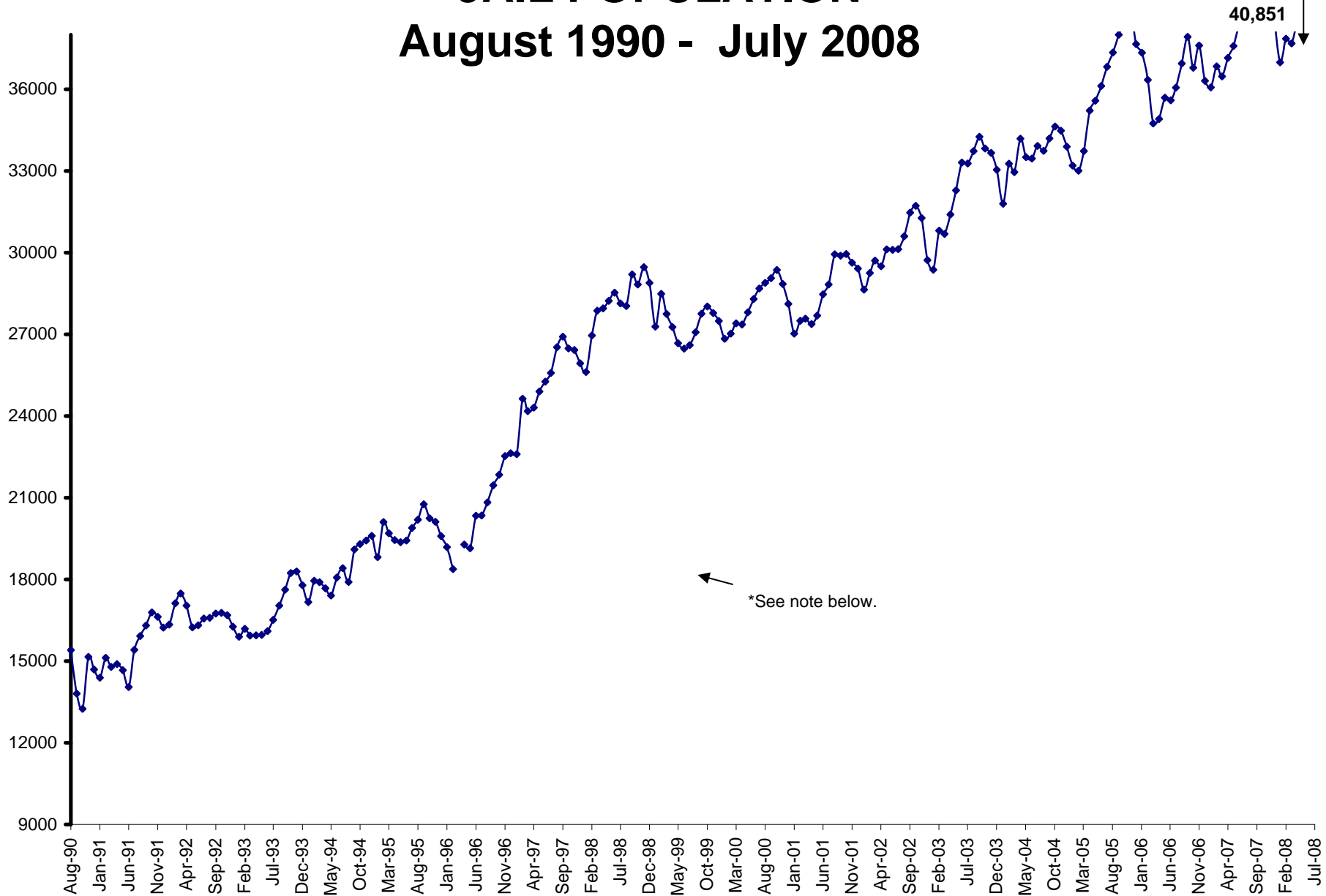
December 1990 - July 2008



***NOTE:** Only 101 counties reported data for January 1987 while 80 counties reported data for March 1996; therefore, data is not shown for these two months. The capacity dropped significantly in October 2002 after Clayton County closed 890 beds because of staffing shortages.

JAIL POPULATION

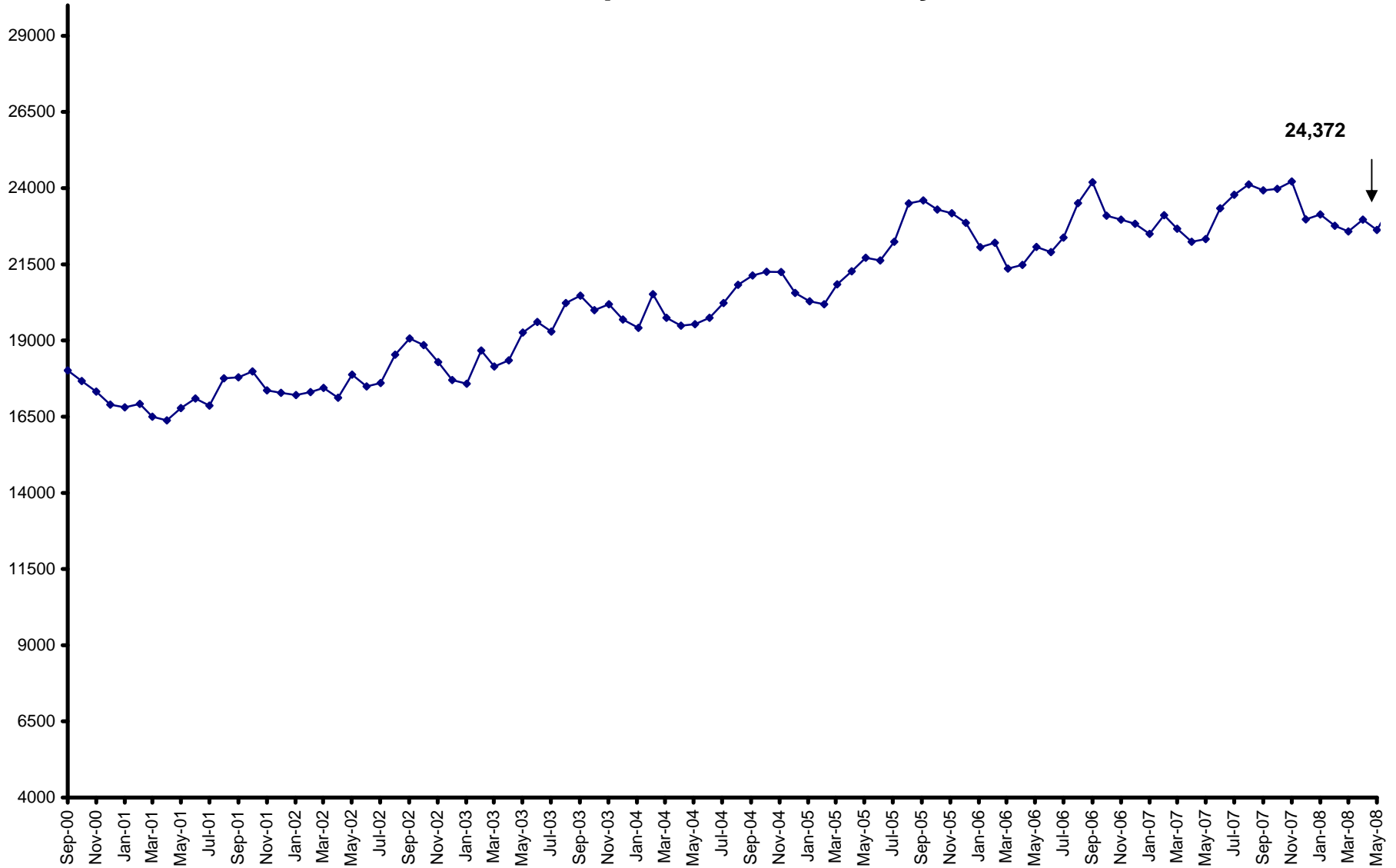
August 1990 - July 2008



***NOTE:** Only 101 counties reported data for January 1987 while 80 counties reported data for March 1996; therefore, data is not shown for these two months.

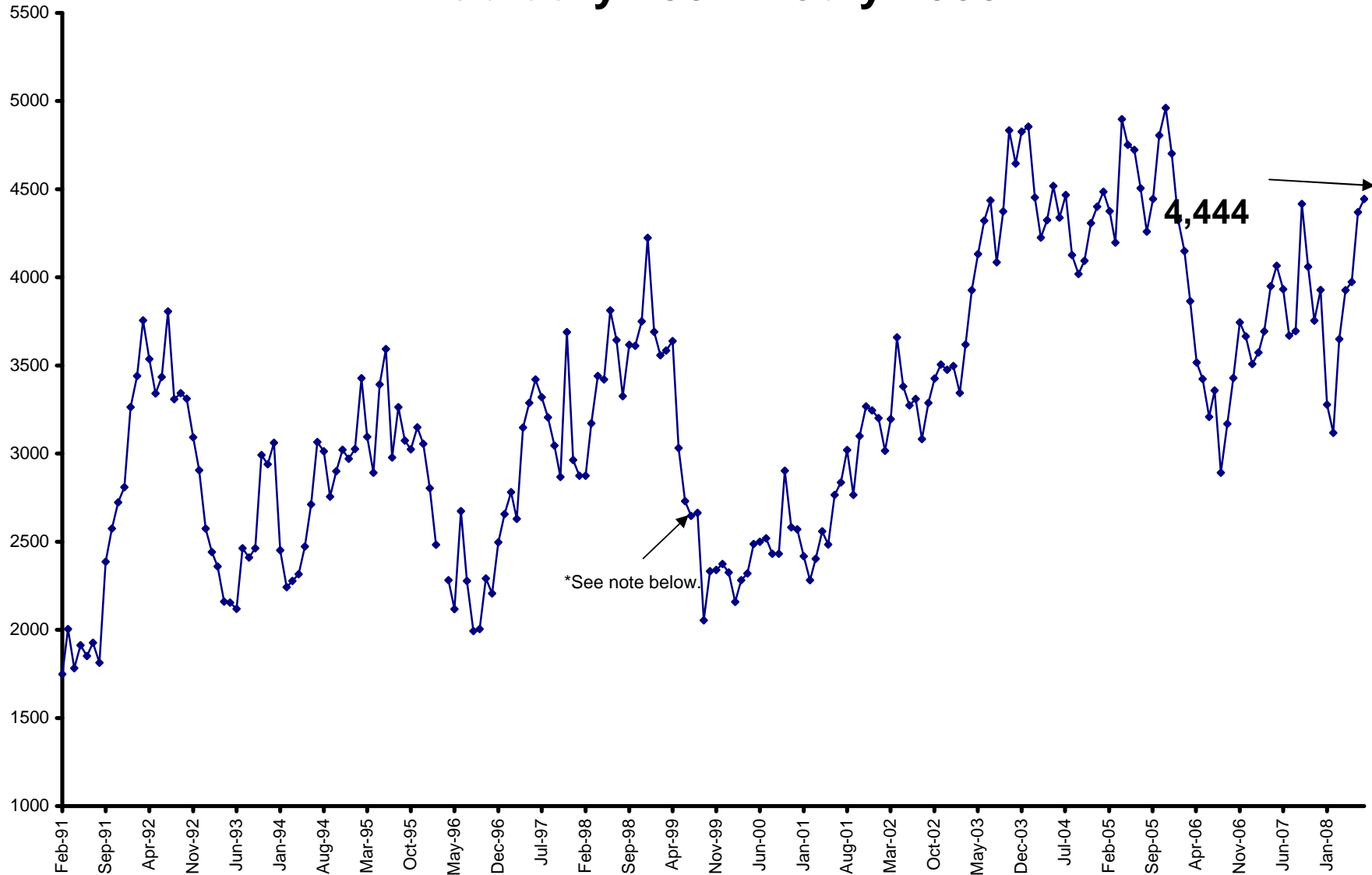
INMATES AWAITING TRIAL IN JAIL

September 2000 - July 2008



INMATES SENTENCED TO STATE INSTITUTIONS

February 1991 - July 2008



***NOTE:** Only 101 counties reported data for January 1987 while 80 counties reported data for March 1996; therefore, data is not shown for these two months.

County Jail Report
Primary Jail Capacity Data
July 2008

(Does not include Inmates housed in other detention facilities such as Work Release Centers, County Prisons, etc.)

Jurisdiction	Total Number of Inmates			Inmates as % of Capacity		Number of Inmates Sentenced to State		Number of Inmates Awaiting Trial in Jail		Number of Inmates Serving County Sentence		Number of Other Inmates	
	In Jail	Jail Capacity		Number	% of Total	Number	% of Total	Number	% of Total	Number	% of Total	Number	% of Total
001	APPLING	85	84	101%	13	15%	49	58%	7	8%	16	19%	
002	ATKINSON	22	18	122%	7	32%	13	59%	2	9%	0	0%	
003	BACON	49	68	72%	3	6%	26	53%	11	22%	9	18%	
004	BAKER	3	14	21%	0	0%	2	67%	0	0%	1	33%	
005	BALDWIN	236	187	126%	16	7%	161	68%	38	16%	21	9%	
006	BANKS	51	60	85%	5	10%	10	20%	5	10%	31	61%	
007	BARROW	259	90	288%	13	5%	207	80%	39	15%	0	0%	
008	BARTOW	593	471	126%	73	12%	308	52%	191	32%	21	4%	
009	BEN HILL	119	136	88%	8	7%	109	92%	0	0%	2	2%	
010	BERRIEN	85	72	118%	0	0%	0	0%	56	66%	29	34%	
011	BIBB	847	966	88%	95	11%	323	38%	15	2%	414	49%	
012	BLECKLEY	NO JAIL	0	0	0%	0	0%	0	0%	0	0%	0	0%
013	BRANTLEY		12	23	52%	1	8%	1	8%	0	0%	10	83%
014	BROOKS		69	112	62%	5	7%	36	52%	3	4%	25	36%
015	BRYAN		58	68	85%	6	10%	43	74%	2	3%	7	12%
016	BULLOCH		285	106	269%	50	18%	137	48%	66	23%	32	11%
017	BURKE		120	138	87%	5	4%	64	53%	9	8%	42	35%
018	BUTTS		150	316	47%	14	9%	124	83%	12	8%	0	0%
019	CALHOUN		13	42	31%	3	23%	8	62%	1	8%	1	8%
020	CAMDEN		162	188	86%	13	8%	139	86%	10	6%	0	0%
021	CANDLER		45	72	63%	8	18%	12	27%	10	22%	15	33%
022	CARROLL		550	682	81%	40	7%	99	18%	291	53%	120	22%
023	CATOOSA		171	248	69%	30	18%	117	68%	12	7%	12	7%
024	CHARLTON	NO JAIL	0	0	0%	0	0%	0	0%	0	0%	0	0%
025	CHATHAM		1822	1524	120%	190	10%	1543	85%	71	4%	18	1%
026	CHATTAHOOCHEE	NO JAIL	0	0	0%	0	0%	0	0%	0	0%	0	0%
027	CHATTOOGA		67	47	143%	28	42%	37	55%	2	3%	0	0%
028	CHEROKEE		541	512	106%	64	12%	418	77%	38	7%	21	4%
029	CLARKE		368	338	109%	26	7%	230	63%	111	30%	1	0%
030	CLAY	NO JAIL	0	0	0%	0	0%	0	0%	0	0%	0	0%
031	CLAYTON		1635	1920	85%	75	5%	824	50%	550	34%	186	11%
032	CLINCH		33	26	127%	14	42%	16	48%	1	3%	2	6%
033	COBB		2366	1925	123%	354	15%	1678	71%	283	12%	51	2%
034	COFFEE		274	188	146%	25	9%	244	89%	5	2%	0	0%
035	COLQUITT		201	210	96%	25	12%	129	64%	26	13%	21	10%
036	COLUMBIA		247	266	93%	14	6%	181	73%	49	20%	3	1%
037	COOK		103	108	95%	27	26%	56	54%	2	2%	18	17%
038	COWETA		340	300	113%	40	12%	178	52%	100	29%	22	6%
039	CRAWFORD		15	22	68%	5	33%	1	7%	3	20%	6	40%
040	CRISP		151	170	89%	34	23%	84	56%	11	7%	22	15%
041	DADE		64	96	67%	10	16%	40	63%	9	14%	5	8%
042	DAWSON		191	120	159%	7	4%	40	21%	80	42%	64	34%

County Jail Report
Primary Jail Capacity Data
July 2008

(Does not include Inmates housed in other detention facilities such as Work Release Centers, County Prisons, etc.)

Jurisdiction	Total Number of Inmates			Number of Inmates Sentenced to State		Number of Inmates Awaiting Trial in Jail		Number of Inmates Serving County Sentence		Number of Other Inmates		
	In Jail	Jail Capacity	Inmates as % of Capacity	Number	% of Total	Number	% of Total	Number	% of Total	Number	% of Total	
043	DECATUR	178	175	102%	23	13%	115	65%	11	6%	29	16%
044	DEKALB	3257	3636	90%	176	5%	2508	77%	443	14%	130	4%
045	DODGE	91	72	126%	19	21%	45	49%	18	20%	9	10%
046	DOOLY	142	154	92%	16	11%	49	35%	1	1%	76	54%
047	DOUGHERTY	860	1230	70%	100	12%	584	68%	156	18%	20	2%
048	DOUGLAS	651	810	80%	128	20%	394	61%	116	18%	13	2%
049	EARLY	44	66	67%	4	9%	33	75%	7	16%	0	0%
050	ECHOLS	NO JAIL	0	0%	0	0%	0	0%	0	0%	0	0%
051	EFFINGHAM	109	106	103%	28	26%	78	72%	0	0%	3	3%
052	ELBERT	61	96	64%	5	8%	34	56%	17	28%	5	8%
053	EMANUEL	110	102	108%	8	7%	61	55%	2	2%	39	35%
054	EVANS	28	26	108%	6	21%	8	29%	14	50%	0	0%
055	FANNIN	43	84	51%	2	5%	38	88%	3	7%	0	0%
056	FAYETTE	307	384	80%	46	15%	201	65%	59	19%	1	0%
057	FLOYD	667	790	84%	105	16%	302	45%	145	22%	115	17%
058	FORSYTH	117	134	87%	0	0%	46	39%	41	35%	30	26%
059	FRANKLIN	74	72	103%	3	4%	56	76%	12	16%	3	4%
060	FULTON	3024	2688	113%	129	4%	1915	63%	355	12%	625	21%
061	GILMER	107	142	75%	18	17%	69	64%	9	8%	11	10%
062	GLASCOCK	NO JAIL	0	0%	0	0%	0	0%	0	0%	0	0%
063	GLYNN	547	344	159%	76	14%	314	57%	11	2%	146	27%
064	GORDON	254	142	179%	59	23%	119	47%	53	21%	23	9%
065	GRADY	104	124	84%	25	24%	32	31%	22	21%	25	24%
066	GREENE	99	125	79%	44	44%	42	42%	7	7%	6	6%
067	GWINNETT	2930	2744	107%	250	9%	1248	43%	516	18%	916	31%
068	HABERSHAM	104	130	80%	22	21%	58	56%	8	8%	16	15%
069	HALL	930	1026	91%	49	5%	412	44%	79	8%	390	42%
070	HANCOCK	29	80	36%	3	10%	20	69%	1	3%	5	17%
071	HARALSON	110	120	92%	8	7%	70	64%	20	18%	12	11%
072	HARRIS	70	100	70%	11	16%	23	33%	0	0%	36	51%
073	HART	60	53	113%	8	13%	48	80%	3	5%	1	2%
074	HEARD	59	60	98%	29	49%	19	32%	8	14%	3	5%
075	HENRY	778	419	186%	160	21%	517	66%	101	13%	0	0%
076	HOUSTON	505	507	100%	47	9%	356	70%	80	16%	22	4%
077	IRWIN	502	689	73%	0	0%	31	6%	0	0%	471	94%
078	JACKSON	168	123	137%	1	1%	144	86%	4	2%	19	11%
079	JASPER	35	64	55%	6	17%	10	29%	1	3%	18	51%
080	JEFFDAVIS/HAZ	54	68	79%	14	26%	38	70%	2	4%	0	0%
081	JEFFERSON	117	128	91%	2	2%	40	34%	9	8%	66	56%
082	JENKINS	14	24	58%	1	7%	12	86%	0	0%	1	7%
083	JOHNSON	48	42	114%	15	31%	20	42%	2	4%	11	23%
084	JONES	105	125	84%	21	20%	60	57%	8	8%	16	15%

County Jail Report
Primary Jail Capacity Data
July 2008

(Does not include Inmates housed in other detention facilities such as Work Release Centers, County Prisons, etc.)

Jurisdiction	Total Number of Inmates In Jail	Jail Capacity	Inmates as % of Capacity	Number of Inmates Sentenced to State		Number of Inmates Awaiting Trial in Jail		Number of Inmates Serving County Sentence		Number of Other Inmates	
				Number	% of Total	Number	% of Total	Number	% of Total	Number	% of Total
085 LAMAR	50	158	32%	5	10%	35	70%	3	6%	7	14%
086 LANIER NO JAIL	0	0	0%	0	0%	0	0%	0	0%	0	0%
087 LAURENS	265	270	98%	12	5%	224	85%	13	5%	16	6%
088 LEE	72	75	96%	10	14%	41	57%	19	26%	2	3%
089 LIBERTY	273	252	108%	38	14%	199	73%	3	1%	33	12%
090 LINCOLN	43	92	47%	4	9%	26	60%	4	9%	9	21%
091 LONG NO JAIL	0	0	0%	0	0%	0	0%	0	0%	0	0%
092 LOWNDES	711	620	115%	38	5%	504	71%	117	16%	52	7%
093 LUMPKIN	71	150	47%	17	24%	35	49%	17	24%	2	3%
094 MCDUFFIE	150	217	69%	19	13%	38	25%	10	7%	83	55%
095 MCINTOSH	91	114	80%	3	3%	28	31%	1	1%	59	65%
096 MACON	34	68	50%	5	15%	20	59%	2	6%	7	21%
097 MADISON	53	64	83%	10	19%	31	58%	0	0%	12	23%
098 MARION	26	30	87%	10	38%	15	58%	1	4%	0	0%
099 MERIWETHER	117	106	110%	11	9%	82	70%	21	18%	3	3%
100 MILLER	61	70	87%	8	13%	24	39%	24	39%	5	8%
101 MITCHELL	91	116	78%	22	24%	37	41%	20	22%	12	13%
102 MONROE	112	168	67%	9	8%	80	71%	17	15%	6	5%
103 MONTGOMERY NO JAIL	0	0	0%	0	0%	0	0%	0	0%	0	0%
104 MORGAN	72	67	107%	16	22%	42	58%	4	6%	10	14%
105 MURRAY	97	120	81%	14	14%	53	55%	28	29%	2	2%
106 MUSCOGEE	1179	927	127%	137	12%	735	62%	162	14%	145	12%
107 NEWTON	598	600	100%	190	32%	231	39%	98	16%	79	13%
108 OCONEE	60	136	44%	5	8%	17	28%	9	15%	29	48%
109 OGLETHORPE	40	64	63%	2	5%	36	90%	1	3%	1	3%
110 PAULDING	296	244	121%	28	9%	202	68%	49	17%	17	6%
111 PEACH	67	72	93%	4	6%	37	55%	12	18%	14	21%
112 PICKENS	73	140	52%	1	1%	62	85%	3	4%	7	10%
113 PIERCE	55	72	76%	45	82%	5	9%	5	9%	0	0%
114 PIKE	45	34	132%	2	4%	13	29%	26	58%	4	9%
115 POLK	131	362	36%	9	7%	79	60%	23	18%	20	15%
116 PULASKI	37	42	88%	6	16%	24	65%	1	3%	6	16%
117 PUTNAM	71	120	59%	19	27%	41	58%	7	10%	4	6%
118 QUITMAN NO JAIL	0	0	0%	0	0%	0	0%	0	0%	0	0%
119 RABUN	91	96	95%	3	3%	62	68%	3	3%	23	25%
120 RANDOLPH	23	32	72%	2	9%	19	83%	2	9%	0	0%
121 RICHMOND	1131	910	124%	102	9%	653	58%	142	13%	234	21%
122 ROCKDALE	430	308	140%	49	11%	319	74%	47	11%	15	3%
123 SCHLEY	10	12	83%	4	40%	5	50%	0	0%	1	10%
124 SCREVEN	95	150	63%	15	16%	38	40%	13	14%	29	31%
125 SEMINOLE	39	54	72%	8	21%	13	33%	7	18%	11	28%
126 SPALDING	423	540	78%	25	6%	314	74%	84	20%	0	0%

County Jail Report
Primary Jail Capacity Data
July 2008

(Does not include Inmates housed in other detention facilities such as Work Release Centers, County Prisons, etc.)

Jurisdiction	Total Number of Inmates In Jail	Jail Capacity	Inmates as % of Capacity	Number of Inmates Sentenced to State		Number of Inmates Awaiting Trial in Jail		Number of Inmates Serving County Sentence		Number of Other Inmates		
				Number	% of Total	Number	% of Total	Number	% of Total	Number	% of Total	
127	STEPHENS	95	94	101%	16	17%	31	33%	6	6%	42	44%
128	STEWART	0	14	0%	0	0%	0	0%	0	0%	0	0%
129	SUMTER	203	262	77%	14	7%	123	61%	9	4%	57	28%
130	TALBOT	11	22	50%	0	0%	10	91%	0	0%	1	9%
131	TALIAFERO	NO JAIL	0	0%	0	0%	0	0%	0	0%	0	0%
132	TATTNALL	63	46	137%	14	22%	28	44%	17	27%	4	6%
133	TAYLOR	21	27	78%	9	43%	9	43%	1	5%	2	10%
134	TELFAIR	29	36	81%	2	7%	20	69%	2	7%	5	17%
135	TERRELL	16	42	38%	0	0%	12	75%	4	25%	0	0%
136	THOMAS	201	270	74%	17	8%	156	78%	22	11%	6	3%
137	TIFT	234	260	90%	16	7%	33	14%	159	68%	26	11%
138	TOOMBS	132	128	103%	27	20%	95	72%	3	2%	7	5%
139	TOWNS	36	50	72%	10	28%	25	69%	1	3%	0	0%
140	TREUTLEN	18	8	225%	2	11%	9	50%	5	28%	2	11%
141	TROUP	435	240	181%	83	19%	319	73%	16	4%	17	4%
142	TURNER	43	102	42%	0	0%	0	0%	28	65%	15	35%
143	TWIGGS	28	48	58%	0	0%	0	0%	28	100%	0	0%
144	UNION	71	54	131%	33	46%	22	31%	13	18%	3	4%
145	UPSON	201	213	94%	38	19%	104	52%	38	19%	21	10%
146	WALKER	161	225	72%	36	22%	112	70%	13	8%	0	0%
147	WALTON	367	440	83%	66	18%	202	55%	68	19%	31	8%
148	WARE	441	500	88%	15	3%	270	61%	62	14%	94	21%
149	WARREN	NO JAIL	0	0%	0	0%	0	0%	0	0%	0	0%
150	WASHINGTON	66	80	83%	10	15%	44	67%	1	2%	11	17%
151	WAYNE	179	170	105%	15	8%	156	87%	0	0%	8	4%
152	WEBSTER	NO JAIL	0	0%	0	0%	0	0%	0	0%	0	0%
153	WHEELER	12	18	67%	3	25%	9	75%	0	0%	0	0%
154	WHITE	63	64	98%	8	13%	28	44%	13	21%	14	22%
155	WHITFIELD	380	551	69%	65	17%	189	50%	84	22%	42	11%
156	WILCOX	38	16	238%	5	13%	20	53%	2	5%	11	29%
157	WILKES	53	80	66%	16	30%	15	28%	17	32%	5	9%
158	WILKINSON	32	44	73%	0	0%	16	50%	1	3%	15	47%
159	WORTH	45	46	98%	4	9%	40	89%	1	2%	0	0%
	Grand Totals	40,851	41,759	98%	4,444	11%	24,372	60%	6,077	15%	5,958	15%